

## Overnight Stay in Vehicle



## A roadside station with RV park functionality

As a highly convenient "RV Park," it offers spacious parking, a dedicated car wash area, equipment rentals, a dump station, and water facilities. Even non-staying visitors can use the showers, coin laundry, and the seaside-view sauna. It's a new hub of activity in Shiranuka Town, welcoming both tourists and locals.

**Usage Fee** ¥2,500 per night per vehicle (tax included)

**Check-in** 1:00 PM - 7:00 PM **Check-out** No formal procedure; please leave by 12:00 PM

**Reservation Deadline** By 6:30 PM the day before (same-day reservations accepted if space is available)

**Reservation Methods** ① By phone **Tel: 01547-5-3317**

② Online via RV Park Association website form



**Cancellations / Changes**

- Please cancel by the day before your stay.
- Same-day cancellations will incur a cancellation fee.
- For same-day cancellations, 100% of the lodging fee will be charged.
- For changes, we may not be able to accommodate your request depending on availability.

**Vehicle Size Limits** Within parking space (4.0m × 7.0m). Vehicles over 7.0m in length not allowed.

### Pets

Allowed

- Pets are not allowed inside the facility buildings.
- Please dispose of pet waste properly.
- Be considerate of other visitors.
- Always use a leash when walking your pet.

**Free Services**

- Free Wi-Fi
- 24-hour accessible restrooms
- Water station
- Dump station

**Paid Services**

- Electricity usage: ¥600 per night (tax included)
- Dump station usage: ¥500 (tax included)
- Portable high-pressure washer rental: ¥300 per hour (tax included)



### Parking

- Standard vehicles: 169 spaces
- Large vehicles: 25 spaces
- Priority parking: 3 spaces
- EV charging spaces: 2
- Overnight parking spaces: 12
- Bicycle parking: 10
- Motorcycle parking: 11

※The picture is for illustrative purposes only.

This roadside station features restaurants that use local ingredients from Shiranuka Town. On sunny days, you can enjoy the beautiful view of Koi-toi Beach from the "Azumashi Living" area with a sea view or the observation deck on the second floor.



Roadside Station Shiranuka  
**Koi-toi Hall**

A roadside station  
that makes you say  
"I want to go!"



### Contact Information



Roadside Station Shiranuka

**Koi-toi Hall** Tel: 01547-5-3317

〒088-0562 3-chome 2-1 Koitoi, Shiranuka-cho,  
Shiranuka-gun, Hokkaido, JAPAN

<https://michinoeki-shiranuka.jp/>

### Business Hours/

•Main Building / Fresh Market : 9:00 AM - 7:00 PM  
•Tenants : 10:00 AM - 7:00 PM (Last Order 6:30 PM)  
※Restrooms and parking are open 24/7, year-round

**Closed/ New Year holidays** (Dec 30 - Jan 3)



HP



# A Roadside Station That Makes You Say "I Want to Go!"

Facing the scenic Koi-toi Coast, Roadside Station Shiranuka – Koi-toi Hall is a two-story facility equipped with an indoor observation deck.



Eat

## Specialty Menus Featuring Local Ingredients from Shiranuka

Enjoy a wide variety of dishes made with the best of Shiranuka's local produce, available for both eat-in and takeout. Many menu items are photo-worthy and make perfect travel memories. Treat yourself to Shiranuka's unique flavors through delicious meals!



Lu Kitchen

A direct store run by Hokkaido Ezo Deer Factory, offering a wide range of dishes featuring locally harvested venison and seafood-based takeout options unique to Shiranuka.



Fresh Cream Cheese Desserts jiri

A takeout shop offering popular cream cheese sweets from the beloved patisserie jiri in Kushiro. Enjoy the melt-in-your-mouth cream like morning mist.



Seafood Rice Bowl Specialty Shop Donburi no Suke

A seafood rice bowl restaurant directly operated by Sasaya Shoten has opened at Koitomokan! Proud of its freshness and pricing, made possible through its own expert selection and processing. Enjoy authentic flavors with generous servings of seasonal seafood such as salmon, salmon roe, and scallops piled high in each bowl.



Kono Butadon ("This Pork Bowl")

A local favorite pork bowl made with Akan Pork, known for its tender texture, mild fat, and lack of odor. The much-loved Spakatsu (spaghetti with pork cutlet) is also available.



KOIPAN

Bread made with Shiranuka's ingredients and local products, including heart-shaped loaves inspired by the "Koi" (love) in Koitoi. Freshly baked every day.



Sapporo Ramen Hinryu

A popular ramen shop offering authentic Sapporo-style ramen. Their miso ramen, made with award-winning aged miso, is a must-try.



## A Hub of Community & Culture Roadside Station Shiranuka



Sauna

A unique roadside station offering a "Sea View Sauna," rare even in Japan.

Relax while gazing out over the Koi-toi Coast. Whether you're a tourist or a local, unwind in this one-of-a-kind sauna experience.



Information

Find a wide range of local info, including about Shiranuka Town and the Kushiro area.

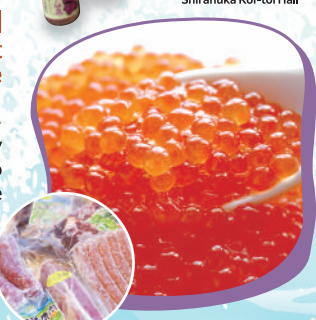
Staff responsible for facility management are always on-site to assist with questions about the station and nearby tourist spots.



Shop



Koi-toi Market Inside Roadside Station Shiranuka Koi-toi Hall



Enjoy fresh agricultural, livestock, and marine products nurtured by Shiranuka's rich natural environment all year round.

From the popular Tantaka Ramene, cheese, venison, to fresh seafood directly from the Shiranuka fishing port—there's a wide selection unique to the town. Perfect for souvenirs or home use. Come and enjoy the rich bounty of Shiranuka

Products available here are also part of Shiranuka's Furusato Nozei (Hometown Tax Return Gift) program.

## Play Kids & Family Park "Kokko Park"

Inside the facility is Kokko Park, a play area featuring net climbing equipment, a large slide, and a crawling area for toddlers. While the kids play, you can enjoy the stunning view of the Koi-toi Coast just outside.

